



CHILDREN'S TRUST  
OF ALACHUA COUNTY

## BUILDING OUR FUTURE – BLOCK BY BLOCK



Annual Report  
[childrenstrustofalachuacounty.us](http://childrenstrustofalachuacounty.us)



**CHILDREN'S TRUST**  
OF ALACHUA COUNTY

## BOARD



Lee Pinkoson  
Chair  
Gubernatorial Appointee



Dr. Maggie Labarta  
Vice Chair  
Gubernatorial Appointee



Tina Certain  
Treasurer  
School Board Member



Dr. Karen Cole-Smith  
Board Member  
Gubernatorial Appointee



Ken Cornell  
Board Member  
County Commissioner



Dr. Nancy Hardt  
Board Member  
Gubernatorial Appointee



Dr. Carlee Simon  
Board Member  
Superintendent of Alachua  
County Public Schools



Dr. Patricia Snyder  
Board Member  
Gubernatorial Appointee



Cheryl Twombly  
Board Member  
Community Development  
Administrator Department of  
Children and Families



Judge Susanne Wilson Bullard  
Board Member  
Circuit Judge

## LOCATION



802 NW 5th Ave, Suite 100  
Gainesville, FL 32601

# Children’s Trust of Alachua County Building the Future



Colin Murphy  
Executive Director/  
Secretary to the Board

We get to wake up and do good things for a living. We are fortunate. We are serving our community, and we are building for the future.

We see the smiles of the kids in our programs, and we know we are making progress in fulfilling our mission of

funding and supporting “a coordinated system of community services that allows all youth and their families to thrive.”

We are thankful to have the support of Alachua County citizens, who approved the referendum creating the Children’s Trust of Alachua County over three years ago. Many of the families are smiling through the surveys showing their satisfaction.

Since that time, the Trust has been putting the building blocks together - offering quality programs with careful adherence to best practices in all areas of our

organization. We appreciate the support of the Board and their insights from their extensive experience in child care and youth development.

We are delighted when we see the children learning and having fun. We are inspired by the workers in child care centers and youth development programs, and they are on the frontline of building the future.

The Pandemic impacted the Trust as it did other organizations and citizens. Our children continue to be affected. We have achieved a great deal and provided opportunities despite the Pandemic. We remain vigilant that our children thrive in these challenging times.

We have laid the foundation to better families and children. We are optimistic for our future together.



Lee Pinkoson  
Chair, Governor’s  
Appointee

## CONTENTS

History .....	2
Goals and Indicators .....	3
Summer Programs .....	4
Reach by Numbers .....	6
Pritzker Children’s Initiative .....	7
Featured Programs .....	8
Future Programs .....	11
Financial Report .....	12
Sponsorships .....	13





# History

**The Campaign for the Children's Trust of Alachua County** started as a grassroots movement made up of parents, grandparents, child advocates, and local activists. They knew in their hearts there was more our community could do to support our local children. Local data collected and shared by experts who serve children and youth in Alachua County supported those citizens' beliefs and lived experiences.



**As early as 2002**, the idea of creating a Children's Services Council (CSC) in Alachua County was considered. None of those early efforts gained sufficient momentum to move forward. By 2015, however, certain projects helped crystalize the concept of a CSC. Community members, leaders, and stakeholders, including the Alachua County Board of County Commissioners (BoCC), the Greater Gainesville Chamber of Commerce, the University of Florida, Santa Fe College, the Alachua County Children's Alliance, United Way, Partnership for Strong Families, and the Alachua County Public Schools, began to revisit the idea. These citizens and organizations hosted many community input sessions and public meetings to discuss the path forward.

**In 2016, the BoCC** contracted with the Well Florida Council ([wellflorida.org](http://wellflorida.org)) to conduct a children's needs assessment, with a focus on children prenatal to 5 years old. The BoCC also voted to establish a dependent Children's Services Advisory Board (CSAB). The CSAB was tasked with recommending innovative and creative programs to serve young children, gather data, consult with existing programs, and ultimately make a recommendation to the BoCC regarding the advisability of creating an independent CSC in Alachua County.

**The Campaign for the Children's Trust of Alachua County** conducted polling to ascertain the level of commitment from the community. That polling showed residents supported the initiative, with local voters perceiving literacy, afterschool learning, nutrition, and vocational opportunities as the most important things which could be funded, with early learning and return on investment messages receiving the strongest support. In February 2018, the BoCC unanimously voted to move forward with a voter referendum to create and fund the Children's Trust of Alachua County.

**Through these efforts, the Children's Trust of Alachua County** was established according to Section 125.901 Florida Statutes and Alachua County Ordinance 18-08. In November 2018, the voters approved the Trust referendum by over 61% of the votes. As a Special Independent District with taxing authority, the Trust can levy up to .5 mil, resulting in annual estimated revenues over \$8,000,000.

# Goals and Indicators

This page displays the four goals of the Children's Trust of Alachua County. Alongside each goal are indicators that convey issues facing children and families in Alachua County as compared to the State of Florida.

Key: **Alachua County** **Florida**

## GOAL #1 ALL CHILDREN ARE BORN HEALTHY AND REMAIN HEALTHY



**Low Birth Weight**  
*Live Births Under 5.5lbs*  
WORSE

10.3% (2020)

8.7% (2020)

16.5% (2019)

17.1% (2019)

**Child Food Insecurity**  
**Rate**  
BETTER



## GOAL #2 ALL CHILDREN CAN LEARN WHAT THEY NEED TO BE SUCCESSFUL



**Children are Ready**  
**for Kindergarten**  
BETTER

58.4% (2020)

56.9% (2020)

90.4% (2020)

90.0% (2020)

**High School**  
**Graduation Rates**  
BETTER



## GOAL #3 ALL CHILDREN HAVE NURTURING, SUPPORTIVE CAREGIVERS & RELATIONSHIPS



**Child Maltreatment**  
**Victims**  
*Average per Month*  
*Rate per 1,000*  
WORSE

3.2 (2020)

2.4 (2020)

18.1 (2020)

13.1 (2020)

**Youth Arrested**  
*Rate per 1,000*  
WORSE



## GOAL #4 ALL CHILDREN LIVE IN A SAFE COMMUNITY



**Child Maltreatment**  
**Findings for Inade-**  
**quate Supervision**  
*Rate per 1,000*  
WORSE

8.0 (2020)

6.6 (2020)

6.5 (2020)

3.8 (2020)

**Violent Crimes**  
*Rate per 1,000*  
WORSE



# Summer Programs

## We listened.

In fall of 2020, CTAC commissioned a study with the Youth Development Research-Practice Partnership (YDRPP) with the objective of learning how to best implement summer programming to meet the needs and interests of children and families.

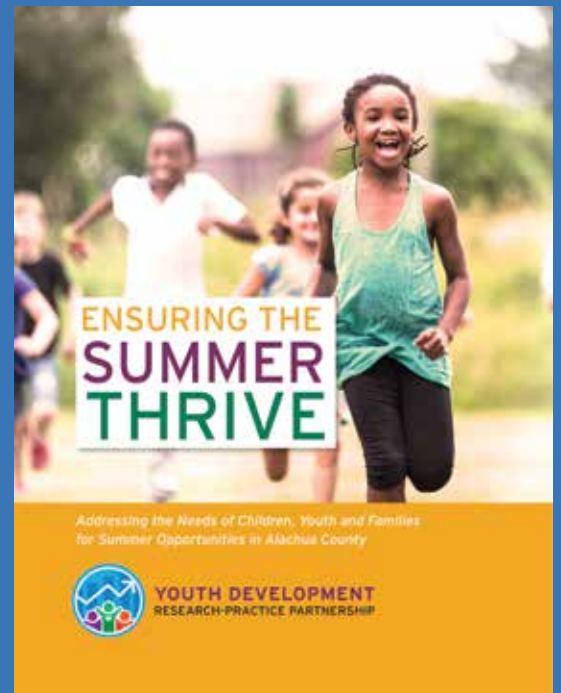
The study solicited information from Alachua County parents and summer camp providers. Some key challenges and areas for CTAC to support included:

- Families identified the process of locating affordable quality summer programming as a major stressor.
- Public Awareness lags with no centralized source of information on summer programming for children and youth in grades K – 8. Both parents and providers expressed a need for such a source.
- Cost is the most common challenge parents face in securing summer care. The cost of summer camp limits children from low-income families from attending.

## We acted.

Armed with community input, CTAC took the following actions:

- Allocated funding for up to 2,000 children in need (i.e., lower income, special learning needs, or DCF involvement) to participate in summer camp.
- Released an RFP and contracted with 22 providers at 24 sites across Alachua County to provide a variety of quality summer camps for children receiving scholarships.
- Implemented effective marketing to increase awareness of summer camp providers and availability of scholarship opportunities.
- In partnership with Alachua County Public Schools, parents of the children enrolled in the district received text blasts and flyers in their child's backpack; potentially reaching thousands of school-age youth informing them of this opportunity.



**CHILDREN'S TRUST**  
OF ALACHUA COUNTY



# Summer Programs

**FY2021 Expenditures = \$661,568**

## Success Stories

How did receiving summer camp scholarships impact children and families?



“Many of our children may have been left alone with older family members with nothing to do but TV and video games or just stuck inside. Camp offers them learning, fun, friendships and just great experiences with other people.”

“We gave something to our child that we couldn’t afford at this time and we are grateful for the opportunity. The camp was able to harness her potential to be more creative and imaginative. She can’t stop commenting on how great her teacher is and how she listened to the lessons and instructions.”

“My kids have noticeable increases in their independence and self-confidence over the course of their weeks in camp. My kids were all positively impacted from their interactions with their counselors, who went above and beyond to do their job.”

“One of our students was terrified of trying new things. By the end of camp, she did all of those things with a huge smile and executed difficult skills in our camp showcase.”

“Even though he tried to act like he was uninterested at first, camp really made a difference in his post high school goals. He made new friends and expressed his appreciation of the camp leaders.”

“It gave my children an opportunity to get outside of the apartment and meet friends, I’ve always wanted my children to experience camp but have never been able to afford it.”

## Family Satisfaction

Based on surveys completed by families at the end of camp we learned:

**99%**

- of parents felt their kids were safe at camp
- of families satisfied with overall camp experience

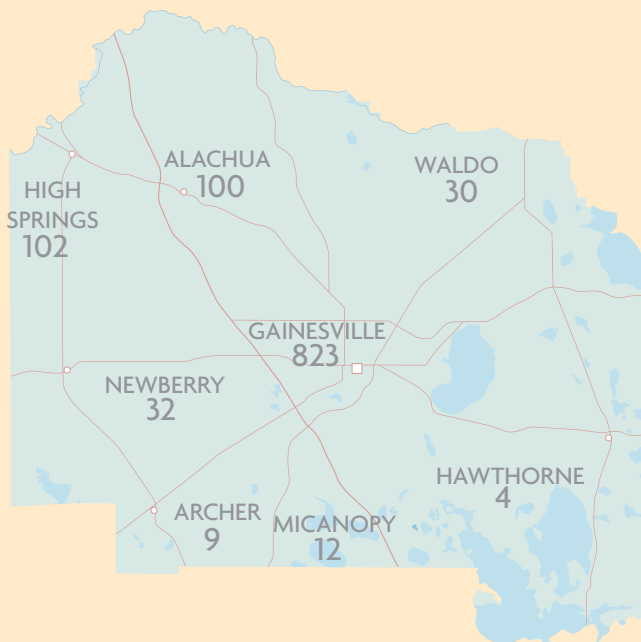
**98%**

- of children enjoyed camp activities
- of parents satisfied with the registration process
- of parents satisfied with camp activities

**97%**

- of parents satisfied with camp communication

## Children Served by Location



## Our Results

Children Served = 1,125  
Average Age: 9.9 years old

- 67%** • 5-11 yrs
- 7%** • 15-18 yrs
- 25%** • 12-14 yrs



Camps ranged from 2 – 7 weeks in duration.  
Children attended an average of 4 weeks.

# CTAC Reach by the Numbers

Served:

\*With possible duplication across programs



**100%** of students in literacy program showed improvement.



First **1000** days of life is critical.



**99%** of families satisfied with overall camp experience.

**Saving Smiles**  
987 Children received dental services.



**100%** of families in **Newborn** would recommend to a friend.

Funded:





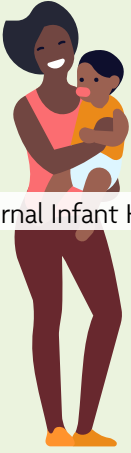

# PRITZKER Children's Initiative

10,808 children ages 0-3 in Alachua County

Data Source: Florida Health Charts –  
Birth Count Query System (2017-2020)

The **Pritzker Children's Initiative (PCI)**, a program of the J.B. and M.K. Pritzker Family Foundation, envisions a country where all children arrive at kindergarten ready to learn. PCI awarded a community grant to the Children's Trust of Alachua County to develop a local plan to collaboratively expand prenatal-to-three services with a focus on equity and family leadership. Our Alachua County partners in this effort include: **Department of Health** (WIC office), **WellFlorida Council** (Healthy Start), and the **Early Learning Coalition**. The objectives and progress on our local implementation plan is outlined below.

## Progress to Date

Pritzker Objective:		Baseline-2020	Year 1-2021	Comparison
 Maternal Infant Health	Increase # of families (prenatal through age 3) receiving coordinated intake and referral via Connect	1,666	1,566*	6% decrease
	Increase # of families (prenatal through age 3) participating in home visiting programs	1,227	1,189*	3% decrease
	Increase # of families participating in NewboRN	275	323*	17% increase
	Increase # of children ages 0-3 actively participating in WIC	2,283	2,558*	12% increase
 Early Care & Education	Increase # of children 0-3 receiving subsidies in classrooms receiving Practice Based Coaching services	46	66	43% increase
	Increase # of children 0-3 receiving subsidies in quality early learning classrooms as measured by a minimum score of 4.5 on the CLASS assessment	114	188	65% increase
	Increase # of children 0-3 receiving subsidies in high quality child care rated as "Gold Seal"	17	41	141% increase

\*Numbers are preliminary and will be finalized in January 2022.

# Featured Programs | Health

## NewboRN Home Visiting Program

**Agency: Healthy Start of North Central Florida**

All Alachua County parents with a newborn baby have the opportunity to have a nurse home visit through the NewboRN program. The nurse evaluates and supports the family's health and resource needs.

**How Much?** 380 families with newborn babies.

**How Well?** 100% of families surveyed said NewboRN was helpful, and would recommend NewboRN to a friend.

**Better Off?** Parents interviewed felt NewboRN:

- has given them more confidence as a parent.
- eased their stress about parenting a newborn.

**Success Story:** A single mother gave birth to her fourth child preterm. Mom was concerned about the baby's jaundice and was unable to keep the baby awake to feed. The nurse showed mom techniques to keep the baby active and alert at the breast and how best to position the baby given her small size. The nurse also taught mom how to assess jaundice. Mom appreciates the support she received through NewboRN and enrolled in Healthy Start for ongoing parent support.

**FY2021 Expenditures: \$325,872**



## Saving Smiles: An Innovative Partnership to Improve Oral Health

**Agency: University of Florida College of Dentistry**

Saving Smiles serves children ages 2 – 18 at high poverty community locations. The program improves access to dental services which are provided at no cost to families through Medicaid and grant funding.

**How Much?** 5,385 dental services.

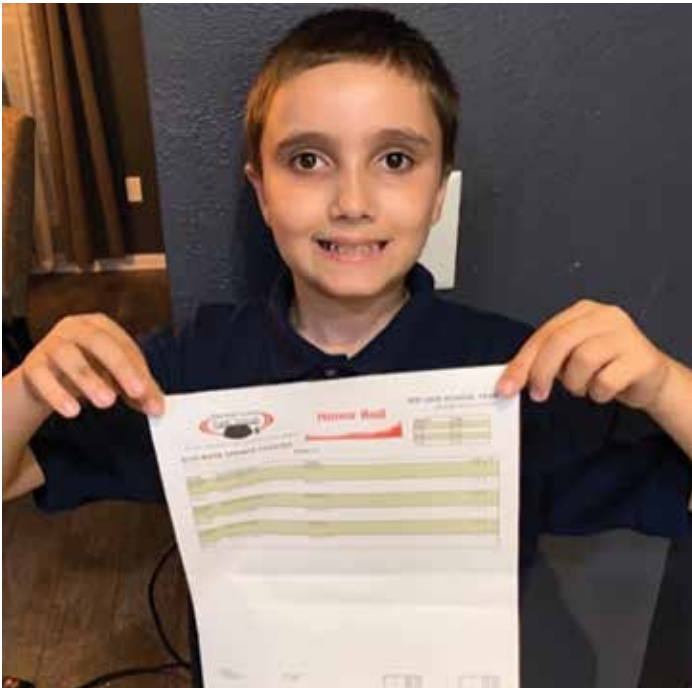
**How Well?** Services provided in 24 different locations and 9 different ZIP codes across Alachua County (including rural communities).

**Better Off?** 987 children received dental services.

**Success Story:** A 2-year-old brought in by his mother was found to have two cavities upon completing his dental exam. Fillings were placed on the teeth to seal the cavities. Fluoride was also applied on all teeth to prevent decay, and oral hygiene and nutrition education was reviewed with mom and child. Without easy access to this dental care, the cavities would likely have progressed to cause pain or infection. The minimally-invasive dental procedures instead left a positive impression on the child and new knowledge for the mother.

**FY2021 Expenditures: \$42,602**

# Featured Programs | Education



## The Bridge Community Center Literacy Program

**Agency: Vineyard Christian Fellowship of Gainesville**

The GNV Bridge Literacy program is a technology-driven, one-on-one tutoring program aimed at helping students behind in their literacy goals to quickly catch up. The combination of this software and encouraging coaches provides supportive feedback while closely tracking student performance.

**How Much?** 66 children tutored.

**How Well?** Students averaged 1.2 years of reading growth in 12 weeks.

**Better Off?** 100% of students enrolled demonstrated growth in their literacy skills; 100% of reading coaches reflected that their efforts had noticeable results.

**Success Story:** One child has autism spectrum disorder and reading difficulty. His mother reached out to us because normal teaching methods were not working. He had a D-minus in reading. He felt “stupid” and that “there was something wrong with him.” With instruction ten minutes a day, he increased his reading level by 2.8 years. His teacher named him “Student of the Month” because of his outstanding effort and progress!

**FY2021 Expenditures: \$52,362**

## New Tech Now STE<sup>2</sup>AM Engine Mobile Makerspace Project

**Agency: New Technology Made Simple Now**

New Tech Now is a mobile maker space that provides technology resources to organizations serving youth who lack access to computers, the internet, and education in high-demand occupational skills, and exposure to STEAM programming.

**How Much?** 246 students participated.

**How Well?** 97% of children reported they liked learning about new technology and that “it was fun.”

**Better Off?** 96% of the students reported and demonstrated the ability to design digital files, use technology responsibly, and follow detailed instructions. Only 3% reported knowing these skills before our program.

**Success Story:** In one activity, students created their own 3D model using Tinkercad. Instructions provided that the models must fit inside a two-inch cube. In the beginning, many of the students were not able to read a ruler properly or translate simple fractions. After seeing their model created in real life they were able to visualize the perspective and understand exact measurements. Every student was able to complete the assignment and see the practical application. Objectives achieved: spatial awareness, math, art, design, problem-solving, and technology!

**FY2021 Expenditures: \$49,611**





# Featured Programs | Supported

## Project YouthBuild Parenting Program

**Agency: Florida Institute for Workforce Innovation dba Project YouthBuild**

Project YouthBuild (PYB) Parenting Program focuses on parents age 16-24 who have dropped out of school. Using an evidence-based curriculum and intensive case management, parents are equipped to improve their parenting skills and family stability.

**How Much?** 28 parents with their 45 children.

**How Well?** Parents engaged in an average of 5 weekly classes.

**Better Off?** Parents reported increased knowledge of:

- child development
- healthy and positive discipline
- health and nutrition

**Success Story:** PYB worked closely with a young parent (who is a domestic violence survivor) while she was pregnant. Staff made sure she was able to get to the doctor, and referred her to the Intimate Partner Violence Assistance Program, where they are helping her file an injunction.

PYB prevented crises for over 15 students, keeping their lights on, getting them to the doctor in medical emergencies, providing them with resources and support. Staff also ensure parents and their children are housed, fed, and healthy.

**FY2021 Expenditures: \$70,110**



## Pace Reach Community Counseling for Adolescent Girls

**Agency: Pace Center for Girls, Alachua**

Pace focuses on adolescent girls with significant risk factors and provides counseling, therapy, and case management from licensed therapists.

**How Much?** 16 girls received therapy.

**How Well?** All girls participated once a week for 2-9 months.

**Better Off?** All girls assessed demonstrated:

- decreased mental health risk
- no juvenile justice involvement
- improved family relationships
- improved time engaged in positive activities.

**Success Story:** Yasmen presented with mental health concerns resulting from enduring childhood abuse and neglect, the incarceration of her father, the death of her mother and grandmother, and unstable foster care placements. Her life was filled with uncertainty, chaos, and despair, resulting in emotional dysregulation and anger management issues. She felt hopeless.

With the help of her therapist, Yasmen learned coping mechanisms to control her anger. With new tools to manage her rage, she became a successful student and role model. Yasmen is now focused on her future and plans to go to college.

**FY2021 Expenditures: \$111,832**

# Future Programs

Being built for the future and brought on to serve Alachua children and families



## Gainesville Thrives

Early childhood book gifting program

Children receive an age appropriate book every month until they turn five. Supports early childhood literacy.

**CTAC Award \$14,000**



Supports professional development in financial planning and business strategy for child care providers.

Increases quality, capacity, and sustainability for child care providers.

**CTAC Award \$90,000**



Wellness Program at Howard Bishop Middle School, a Community Partnership School

Increases access to health and medical awareness for students, parents and the community.

**CTAC Award \$63,750**



Family Partner at Comprehensive Women's Health

Supports maternal and child health system of care, increases prenatal risk screening, enrollment in home visiting programs, maternal and child health resource navigation.

**CTAC Award \$75,000**



## TeensWork Alachua

Summer youth employment  
Youth development and financial literacy

Strengthening Alachua County's workforce development system.

**CTAC Award \$500,000**



## Expand Access

Expand access to safe and enriching summer and afterschool programming that focus on academic, enrichment, exploratory, and physical, health, play and recreation activities.

**CTAC Award \$1,921,675**



## Help Me Grow

Expansion of developmental and behavioral screenings

Referrals and resource navigation improves system model for early detection of disabilities.

**CTAC Award \$220,000**



## Partnership for Reimagining Gainesville

Empowers community members to use their knowledge, skills and experiences to address social problems.

Works with community stakeholders to identify and support impact-focused ideas. Provides supportive resources such as micro-grant funding, technical assistance, social networking, and more.

**CTAC Award \$50,000**



# Financial Report

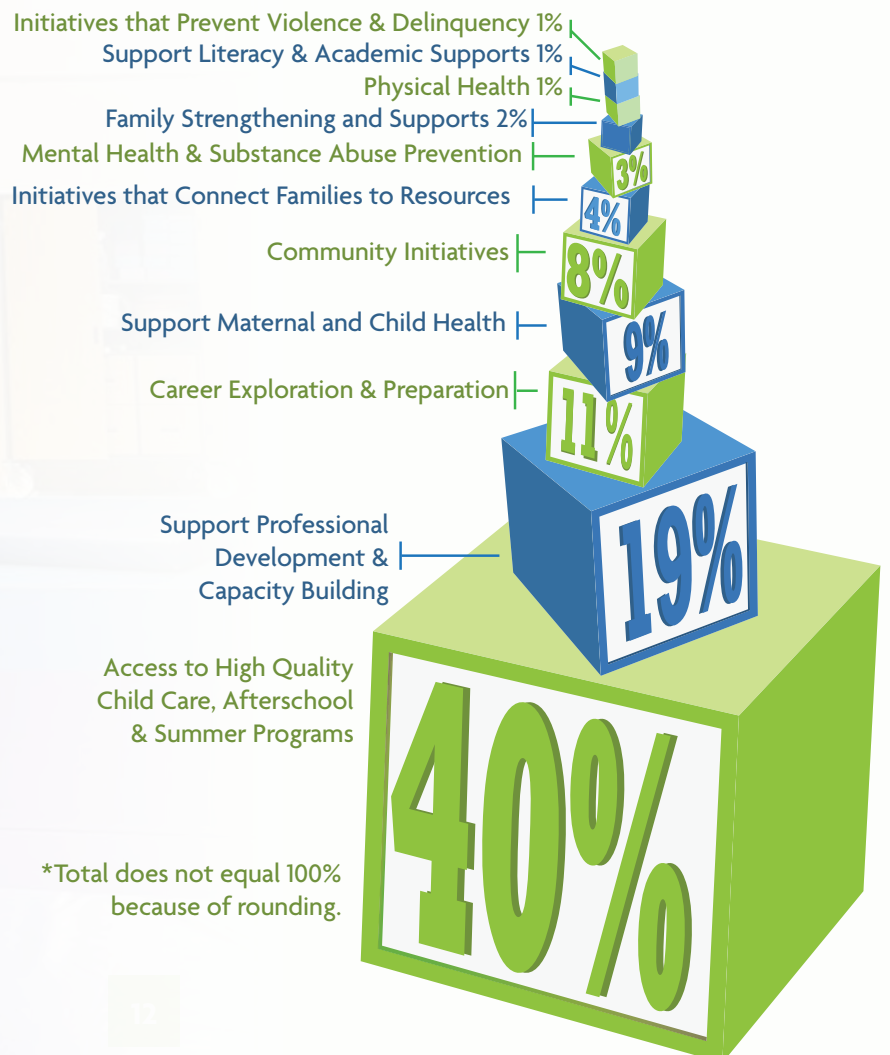
## ALL FUNDS\*

REVENUES:	FY 2021/2022 Budget	FY 2020/2021 Actual**
Property Taxes	\$8,249,047.00	\$7,801,760.08
Miscellaneous Revenue	\$83,333.00	\$211,089.87
Other Sources	\$100,000.00	\$308,814.99
<b>Total Revenue</b>	<b>\$8,432,380.00</b>	<b>\$8,321,664.94</b>
EXPENDITURES:	FY 2021/2022 Budget	FY 2020/2021 Actual
Program Services/Support	\$6,539,680.00	\$2,728,860.17
General Administration	\$1,142,700.00	\$912,560.76
Other Uses Totals	\$750,000.00	\$338,667.00
<b>Total Expenditures</b>	<b>\$8,432,380.00</b>	<b>\$3,980,087.93</b>

\*Current as of 12/2/2021

\*\* Unaudited Amounts FY2020/2021

## BUDGET FOR PROGRAM SERVICES BY STRATEGY\* Fiscal Year 2021/2022



\*Total does not equal 100% because of rounding.





# Children's Trust of Alachua County Sponsorships



Sponsorship funding provides a way for the Trust to partner with child-serving agencies as they reach out and engage the community in ways that benefit the children and families of Alachua County.

Funded programs include:

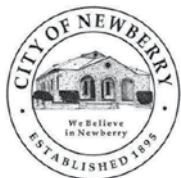
## GENESIS

FAMILY ENRICHMENT CENTER, INC.  
*Strengthening Families. Transforming Communities*

**Genesis Family Enrichment Center** hosted a Trust-Based Relational Intervention (TBRI)<sup>®</sup> Caregiver Overview Workshop. TBRI<sup>®</sup> is designed to equip parents and professionals with knowledge and strategies that enhance connection, manage regulation and provide proactive and responsive behavioral interventions for children from hard places. The goal is to reach parents and caregivers who need this information but cannot afford or have access to this information. The Trust provided \$2,495 to sponsor 100 participants for the Trust-Based Relational Intervention Workshop.



The Trust provided the **Greater Duval Neighborhood Association** \$2,495 for sponsorship of the Annual Summer Sling event. The objectives of the end-of-year event were encourage creative writing and artistic activities by students, Grades K through 12, as well as to recruit students for our Summer program. This was GNDA's second annual Summer Sling Event, including a Writing Arts Contest with cash prizes for winning students and our 1st three-hour Summer Sling event for recruitment for our Summer Program.



The **Concerned Citizens of Newberry, Inc.** (CCON) received \$2,000 for their Back to School Backpack Event. The goal of the event is to reach as many children as possible that may be in need. The event focuses on getting the youth in our community back to school with the proper items. The backpacks are prefilled with school items such as pens, pencils, washable markers, crayons, highlighters, erasers, paper, scissors, glue sticks, index cards, etc. In addition to back-to-school items, the backpacks are filled with hygiene products. The program provided approximately 125-150 backpacks to kids.



The Children's Trust supported the **22nd Annual Stop the Violence/Back to School Rally** with a contribution of \$2,500. The event was organized by People Against Violence Enterprises (PAVE) and is supported by many local sponsors, including the Trust. Gun violence was the main focus of this year's rally. The keynote speaker was Todd Bridges, who starred in the TV sitcom "Diff'rent Strokes." Bridges told the children in attendance: "Please put the guns down and walk away." Bridges had a straightforward message for parents: "If you don't know where your children are, find out!"



United Way of North Central Florida hosts the **Alachua County Campaign for Grade-Level Reading**. It is a network of agencies, community members, providers, institutions, and individuals that meet once per month to focus on maximizing the efforts of the community and organizations to ensure children are reading on grade-level by the end of third grade. The Children's Trust contributed \$1,000 to the campaign.



# Our Providers

Alachua County Board of County Commissioners

Alachua County Sheriff's Office

Big Brothers, Big Sisters of Tampa Bay

Black on Black Crime Task Force

Boys & Girls Clubs of Northeast Florida

Cade Museum for Creativity & Invention

CDS Family & Behavioral Health Services, Inc.

Children Beyond our Borders

City of Alachua

City of Gainesville

City of Waldo

Cultural Arts Coalition

DaySprings Missionary Baptist Church of Gainesville, FL Inc

Deeper Purpose Community Church, Inc

FL Institute for Workforce Innovation, Inc. dba Project YouthBuild

Florida Organic Growers

Gainesville Area Community Tennis Association, Inc.  
dba Aces in Motion

Gainesville Circus Center

Gainesville Sports Camp

Gainesville Thrives

Girls on the Run Alachua County

Girls Place

Good News Arts

Greater Bethel AME Church

Greater Duval Summer Program

Healthy Start of North Central Florida

I AM STEM

Just for Us Education

Kids Count

Manhood Youth Development Foundation

Meridian Behavioral Healthcare

National Alliance on Mental Illness (NAMI) - Gainesville Affiliate

New Technology Made Simple Now, Inc.

North Central Florida YMCA

Pace Center for Girls, Inc.

Partnership for Strong Families

Peaceful Paths, Inc.

Planned Parenthood of South, East and North Florida (PPSENFL)

Renaissance Jax, Inc. dba Swampbots

River Phoenix Center for Peacebuilding

Santa Fe College

Star Center Children's Theatre

The CHILD Center

Traveling Art Camp

UF Health

United Church of Gainesville

United Way of North Central Florida

University of Florida

Vineyard Christian Fellowship of Gainesville, FL



**CHILDREN'S TRUST**  
OF ALACHUA COUNTY

802 NW 5th Ave, Suite 100

Gainesville, FL 32601

Phone: 352-374-1830

Mailing Address:

P.O. Box 5669, Gainesville, FL 32627